

# Optixcare®

EYE EMS

An innovation in Veterinary Ophthalmology:  
**quickly promotes corneal healing  
and reduces discomfort.**



## EXTRACELLULAR MATRIX SUBSTITUTE EYE DROPS FOR PETS

**KEY PART OF YOUR  
FIRST LINE THERAPY  
for all acute corneal ulcers**

**ADJUNCTIVE THERAPY for chronic  
non-healing corneal ulcers**

**POST-KERATOTOMY**

- **RGTA® exclusive regenerative technology**
- **Helps restore and regenerate the corneal extracellular matrix**
- **For dogs, cats, horses and small mammals**
- **Monodose for hygienic precise dosing**
- **Preservative free**



WE BELIEVE IN BRINGING YOU GREAT PRODUCTS  
AT GREAT SAVINGS.

1-877-909-2242  
customerservice@aventix.ca  
www.aventix.ca





An innovation in Veterinary Ophthalmology:  
quickly promotes corneal healing  
and reduces discomfort.

## RGTA®

**RGTA®: ReGeneraTing Agent**, a substitute for heparan sulfates glycosaminoglycans, is resistant to degradation and allows for rapid healing, comfort and recovery.

## EASY TO USE

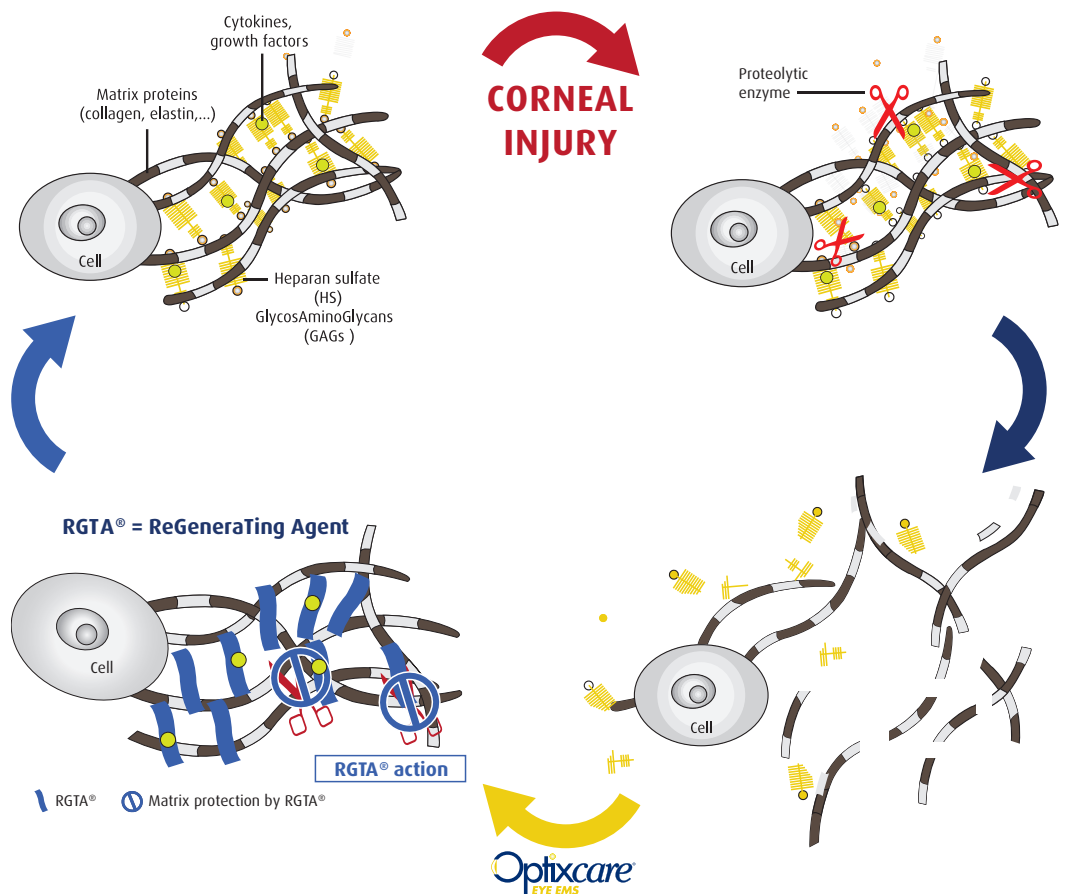
1 DROP EVERY 2 DAYS



The duration of use may vary

It is advised to conduct the fluorescein test 48 hours after the last application

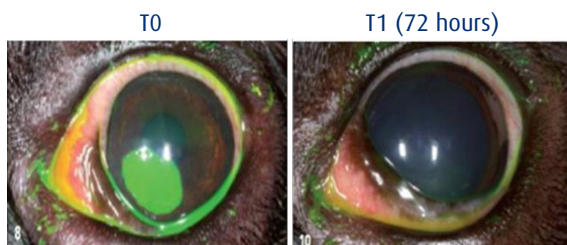
## TISSUE REGENERATION



**Optixcare® EYE EMS improves the quality and healing time for corneal ulcers<sup>1</sup>**

### French Bulldog (17M)

Non-progressive, extensive bilateral corneal ulcer<sup>1</sup>



■ Combined treatment: atropine, diclofenac, meloxicam + Optixcare® EYE EMS (one drop every 2 days until complete healing)

1. Michaud, B, Prise en charge édicale des ulcères cornéens, L'Essentiel, No 285, mars 2013