

## INSTRUCTIONS:

1) Before insertion, inspect catheter.

Moisten catheter with sterile saline to allow yellow suture anchor to slide along the catheter.

2) Lubricate end of catheter with sterile soluble lubricant. Place thumb and index finger of one hand on either side of the prepuce so palm of hand rests on cats lower abdomen. Exert pressure with thumb and index finger in cranial direction to extrude penis from prepuce. Advance catheter into place.

3) Once catheter is in place flush with sterile saline.

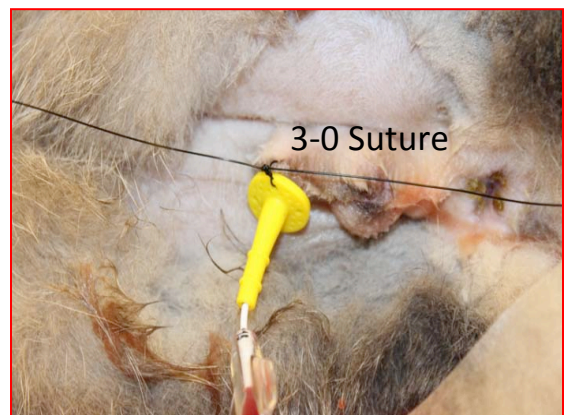


## ***To secure catheter to the cat:***

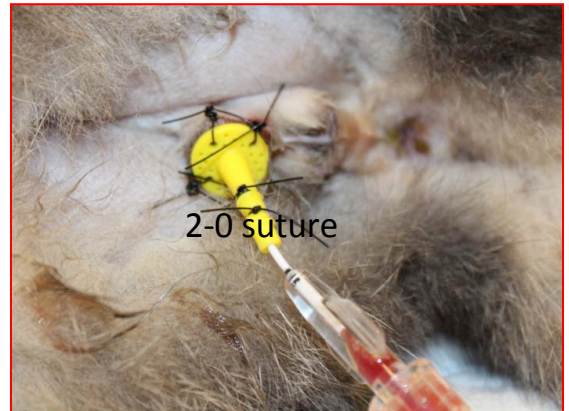
### ***Suturing anchor base directly to the prepuce.***

4) Hold catheter hub with one hand and advance stem of anchor to prepuce by sliding it along catheter using thumb and index finger of other hand.

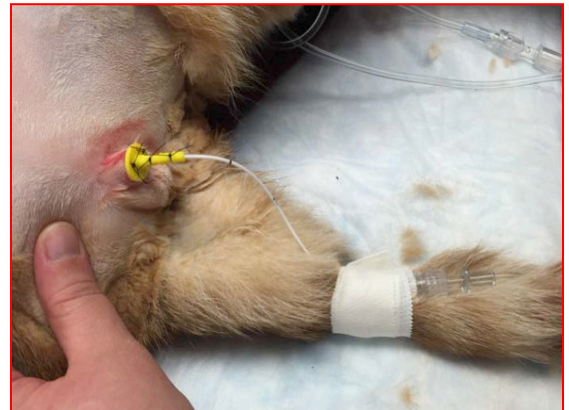
5) Suture base of anchor to prepuce using suture holes. **3-0 sutures are recommended for comfort.** Connect urine collection line.



6) Place two suture ties around anchor base to secure catheter to the cat. Grooves on anchor base prevent sutures from rolling. **2-0 sutures are recommended to minimize risk of catheter migration. Also, the 25cm catheter is recommended to avoid excessive force at the prepuce and to reduce the potential of catheter slipping.**



7) Secure the distal end of the catheter and/or the collection line to the tail of the cat with tape. This will reduce the force the primary securement anchor might see during use to minimize catheter movement and dislodgement.



8) Confirm placement with X-Ray and collect urine specimen.



*Images complements of Garret Pachtinger, VMD, DACVECC , Veterinary Specialty & Emergency Center, Co-Founder VETgirl, LLC*

*r4/9/2019*